



## ICDSSST 2016 Conference on Decision Support Systems Addressing Sustainability & Societal Challenges

### Collab-Net on line: An on line platform for DSS-research collaboration in EWG-DSS

Jadielson Moura<sup>1</sup>, Ana Paula Cabral<sup>1</sup>, Fatima Dargam<sup>2</sup>, Isabelle Linden<sup>3</sup>, Pascale Zaraté<sup>4</sup>

1: UFPE – Management Engineering Department, Recife, Brazil

2: SimTechnology, Graz, Austria

3: Namur University, Namur, Belgium

4: Toulouse University – IRIT, Toulouse, France

[jadielson.moura@ufpe.br](mailto:jadielson.moura@ufpe.br), [apcabral@ufpe.br](mailto:apcabral@ufpe.br), [f.dargam@simtechnology.com](mailto:f.dargam@simtechnology.com), [isabelle.linden@unamur.be](mailto:isabelle.linden@unamur.be), [pascale.zarate@irit.fr](mailto:pascale.zarate@irit.fr)

Recently, the scientific research collaboration has been extended to social network analysis area, which concerns in evaluating the collaborative interaction among papers authors within publication databases. The Collab-Net platform aims to investigate these publication relationship in an automatic way by a Web-based platform. The present system was developed using free platforms for software development and database system purposes. The main goal of the Collab-Net is to allow researchers to analyze their own collaborative network, as well as possibilities for future collaboration among EWG-DSS members only using a Web-based platform, in anywhere at anytime. The Collab-Net system can be used as two end-users profiles: Administrator and Member profiles.

#### ADMINISTRATOR PROFILE

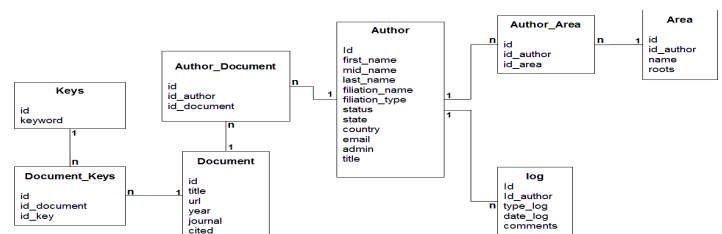
#### MEMBER PROFILE

#### Collab-Net functionalities and technical description:

- A login page is available
- Two users' roles are possible
  - Administrator can add new members, edit members profile and remove members, add areas, edit areas, and remove areas.
  - Member can edit his own profile, find researchers by keywords or areas, run members research in the google scholar, and export the results in Excel format.
- Platform available at: <http://www.negplace.com/collabnet/>
- Developed with base on free platforms of software development and database system:
  - Eclipse Integrated Development Environment (IDE) was used to develop the Web application
  - Java development language together with Java Servlet Page (JSP)
  - Database management system MySQL was applied to for storing and retrieving data using Structured Query Language (SQL)

Google Scholar Database → Collab-Net Database  
Collab-Net Web Platform Version 2.0

#### Data Base Model



#### CONCLUSIONS & REMARKS:

- The Collab-Net support members in the research of their collaboration network by key areas within the EURO Working Group on Decision Support System;
- This Web-based platform is available for all members registered in the group;
- Enables information access regards the author's published papers, such as: title, journal, year, cite number, and coauthors.
- Information recovered may provide future analysis on the researches collaboration and identify cluster areas of the EURO group.

Currently, the Collab-Net Web-based collect data from the google scholar database.